

ACTL6B antibody (pAb)

Catalog No.: RA9003

Basic Information

Molecular weight

50KDa

Category

Primary antibody

Applications

WB

Cross-Reactivity

Human

Background

ACTL6B (Actin-Like 6B) Belongs to the chromatin remodeling brain-specific BAF (bBAF) complex, as such plays a role in remodeling mononucleosomes in an ATP-dependent fashion. Belongs to the neuron-specific chromatin remodeling complex (nBAF complex) and is required for postmitotic neural development and dendritic outgrowth. The transition from proliferating neural stem/progenitor cells to post-mitotic neurons requires a switch in subunit composition of the npBAF and nBAF complexes. As neural progenitors exit mitosis and differentiate into neurons, npBAF complexes which contain ACTL6A/BAF53A and PHF10/BAF45A, are exchanged for homologous alternative ACTL6B/BAF53B and DPF1/BAF45B or DPF3/BAF45C subunits in neuron-specific complexes (nBAF). The npBAF complex is essential for the self-renewal/proliferative capacity of the multipotent neural stem cells. The nBAF complex along with CREST plays a role regulating the activity of genes essential for dendrite growth.

Recommended Dilutions

WB 1:250-1:500

Product Information

Source	Rabbit
Isotype	IgG
Purification	Affinity Purified
Storage buffer	Purified IgG in PBS with 30% glycerol and 0.035% sodium azide. Sodium azide is highly toxic.
Storage Conditions	Some products may be shipped at room temperature. This will not affect their stability or performance. Avoid repeated freeze/thaw cycles by aliquoting items into single-use fractions for storage at -20°C for up to 2 years. Keep all reagents on ice when not in storage.



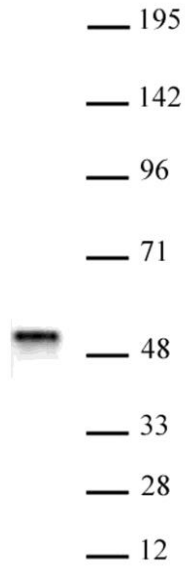
Note: For in vitro research use only, not for diagnostic or therapeutic use, This product is not a medical device.

注意:在体外研究使用, 不用于诊断或治疗用途, 本产品不是医疗装置!

Web:www.ruisbio.com

Tel:400-689-7068

Sales: sales@ruisbio.com



ACTL6B antibody (pAb) tested by Western blot.
Whole cell extract of SH-SY5Y cells (12 ug) probed
with ACTL6B antibody (pAb) at a dilution of 1:500

