

ASH2L antibody (pAb)

Catalog No.: RA9017

Basic Information

Molecular weight

77 kDa

Category

Polyclonal antibody

Applications

ChIP, ChIP-Seq, WB

Cross-Reactivity

Human, Wide Range Predicted

Background

ASH2L (absent, small or homeotic discs 2) is a trithorax protein and is a component of different protein complexes, including i.e. mixed-lineage leukemia (MLL) oncoproteins, which contain histone methyltransferase activity. These complexes trimethylate the lysine 4 of histone H3. Histone H3 trimethyl Lys4 is one of histone modifications that are part of elaborate mechanisms that evolved to control the structure of the chromatin.

Recommended Dilutions

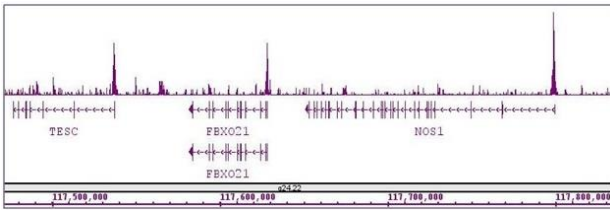
ChIP	10 μ l
ChIP-Seq	10 μ l
WB	1:500-1:2000

Product Information

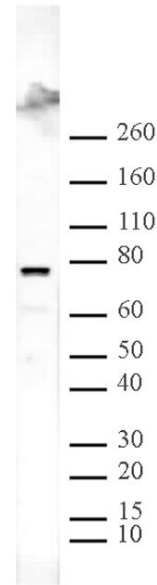
Source	Rabbit
Isotype	Serum
Purification	None
Storage buffer	Rabbit serum containing 30% glycerol and 0.035% sodium azide. Sodium azide is highly toxic.
Storage Conditions	Some products may be shipped at room temperature. This will not affect their stability or performance. Avoid repeated freeze/thaw cycles by aliquoting items into single-use fractions for storage at -20°C for up to 2 years. Keep all reagents on ice when not in storage.

Note: For in vitro research use only, not for diagnostic or therapeutic use, This product is not a medical device.
注意:在体外研究使用, 不用于诊断或治疗用途, 本产品不是医疗装置!





ASH2L antibody (pAb) tested by ChIP-Seq. ChIP was performed using the ChIP-IT High Sensitivity Kit (Cat. No. 53040) with 30 ug of chromatin from undifferentiated hESC cells and 10 ul of antibody. ChIP DNA was sequenced on the Illumina HiSeq and 20 million sequence tags were mapped to identify ASH2L binding sites. The image shows binding across a region of chromosome 12. You can view the complete data set in the UCSC Genome Browser, starting at this specific location, here.



ASH2L pAb tested by Western blot. ASH2L detection by Western blot. The analysis of ASH2L was performed using HeLa nuclear extract and ASH2L pAb at a 1:2,000 dilution.

