

ATAD2 antibody (pAb)

Catalog No.: RA9032

Basic Information

Molecular weight

160 kDa

Category

Polyclonal antibody

Applications

IP, WB

Cross-Reactivity

Human

Background

ATAD2 (ATPase family AAA domain-containing protein 2) may be a transcriptional coactivator of the nuclear receptor ESR1 required to induce the expression of a subset of estradiol target genes, such as CCND1, MYC and E2F1. May play a role in the recruitment or occupancy of CREBBP at some ESR1 target gene promoters. May be required for histone hyperacetylation. Involved in the estrogen-induced cell proliferation and cell cycle progression of breast cancer cells.

Recommended Dilutions

WB	1:500-1:2000
IP	5 - 10 μ l

Product Information

Source	Rabbit
Isotype	IgG
Purification	Affinity Purified
Storage buffer	Purified IgG in PBS with 30% glycerol and 0.035% sodium azide. Sodium azide is highly toxic.
Storage Conditions	Some products may be shipped at room temperature. This will not affect their stability or performance. Avoid repeated freeze/thaw cycles by aliquoting items into single-use fractions for storage at -20°C for up to 2 years. Keep all reagents on ice when not in storage.

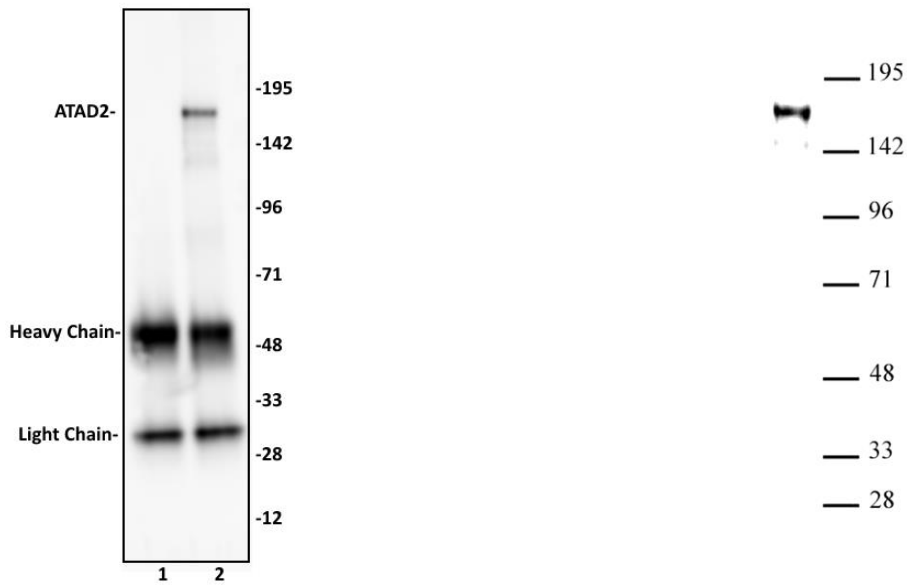
Note: For in vitro research use only, not for diagnostic or therapeutic use, This product is not a medical device.
注意:在体外研究使用, 不用于诊断或治疗用途, 本产品不是医疗装置!

Web: www.ruisbio.com

Tel: 400-689-7068

Sales: sales@ruisbio.com





ATAD2 antibody (pAb) tested by Immunoprecipitation. 10 ul of ATAD2 antibody was used to immunoprecipitate ATAD2 from 250 ug of Jurkat nuclear cell extract (lane 2). 10 ul of rabbit IgG was used as a negative control (lane 1). The immunoprecipitated protein was detected by Western blotting using the ATAD2 antibody at a dilution of 1:1,000.

ATAD2 antibody (pAb) tested by Western blot. ATAD2 detection by Western blot. The analysis was performed using 40 ug Jurkat nuclear cell extract and CENP-B at a 1:1,000 dilution.



Note: For in vitro research use only, not for diagnostic or therapeutic use, This product is not a medical device.

注意:在体外研究使用, 不用于诊断或治疗用途, 本产品不是医疗装置!

Web: www.ruisbio.com

Tel: 400-689-7068

Sales: sales@ruisbio.com