

AbFlex CTCF antibody (rAb)

Catalog No.: RA9045

Basic Information

Molecular weight

120 kDa

Category

Recombinant antibody

Applications

ChIP-Seq, CUT&Tag, WB

Cross-Reactivity

Human

Background

AbFlex antibodies are recombinant antibodies (rAbs) that have been generated using defined DNA sequences to produce highly specific, reproducible antibodies. Each AbFlex antibody contains a 6xHis Tag, a Biotinylation Tag for enzymatic biotin conjugation using the biotin ligase, BirA, and a sortase recognition motif (LPXTG) to attach a variety of labels directly to the antibody including fluorophores, enzymatic substrates (HRP, AP), peptides, drugs as well as solid supports. AbFlex CTCF antibody was expressed in CHO cells and contains rabbit immunoglobulin heavy and light chains. CTCF (CCCTC-binding factor, zinc finger protein) is a chromatin binding factor that binds to DNA sequence specific sites. It is involved in transcriptional regulation by binding to chromatin insulators and preventing interaction between promoter and nearby enhancers and silencers. Preferentially interacts with unmethylated DNA, preventing spreading of CpG methylation and maintaining methylation-free zones. Inversely, binding to target sites is prevented by CpG methylation. Plays an important role in chromatin remodeling. Can dimerize when it is bound to different DNA sequences, mediating long-range chromatin looping.

Recommended Dilutions

WB	0.1-1 μ g/ml
ChIP-Seq	4 μ g
CUT&Tag	1 μ l

Product Information

Source	Rabbit
Isotype	IgG
Purification	Protein A Chromatography
Storage buffer	Purified IgG in 140 mM Hepes, pH 7.5, 70 mM NaCl, 32 mM NaOAc, 0.035% sodium azide, 30% glycerol. Sodium azide is highly toxic.

Storage Conditions Some products may be shipped at room temperature. This will not affect their stability or performance. Avoid repeated freeze/thaw cycles by aliquoting items into single-use fractions for storage at -20°C for up to 2 years. Keep all reagents on ice when not in storage.

Note: For in vitro research use only, not for diagnostic or therapeutic use, This product is not a medical device.

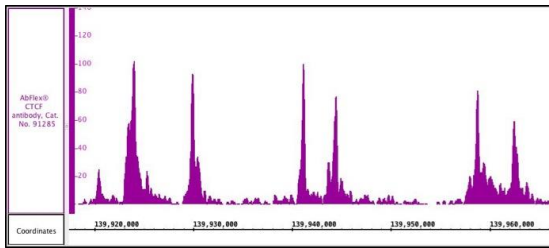
注意:在体外研究使用, 不用于诊断或治疗用途, 本产品不是医疗装置!

Web:www.ruisbio.com

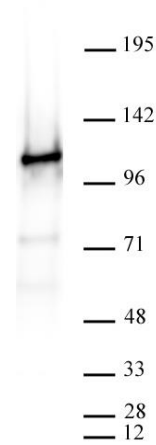
Tel:400-689-7068

Sales: sales@ruisbio.com

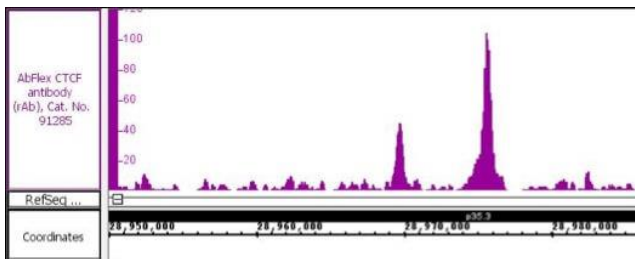




AbFlex CTCF recombinant antibody (rAb) tested by ChIP-Seq Chromatin immunoprecipitation (ChIP) was performed using the ChIP-IT High Sensitivity Kit (Cat. No. 53040) with 30 ug of MCF7 chromatin and 4 ug of CTCF antibody. ChIP DNA was sequenced on the Illumina NextSeq and 8.9 million sequence tags were mapped to identify CTCF binding sites on chromosome 9.



AbFlex CTCF antibody (rAb) tested by Western blot. 20 ug of HeLa cell nuclear extract was run on SDS-PAGE and probed with AbFlex CTCF antibody at 0.2 ug/ml.



AbFlex CTCF recombinant antibody (rAb) tested by CUT&Tag CUT&Tag was performed using 250,000 K562 cells and sequenced using 38 base-pair, paired-end reads on the Illumina NextSeq 500/550. Data was collected from 21 million reads, and CTCF data is shown for Chromosome 1.



Note: For in vitro research use only, not for diagnostic or therapeutic use, This product is not a medical device.

注意:在体外研究使用,不用于诊断或治疗用途,本产品不是医疗装置!

Web:www.ruisbio.com

Tel:400-689-7068

Sales: sales@ruisbio.com