

AbFlex EED antibody (rAb)

Catalog No.: RA9046

Basic Information

Molecular weight

57 kDa

Category

Recombinant antibody

Applications

ChIP, ChIP-Seq, ELISA

Cross-Reactivity

Human

Background

AbFlex antibodies are recombinant antibodies (rAbs) that have been generated using defined DNA sequences to produce highly specific, reproducible antibodies. Each AbFlex antibody contains a 6xHis Tag, a Biotinylation Tag for enzymatic biotin conjugation using the biotin ligase, BirA, and a sortase recognition motif (LPXTG) to attach a variety of labels directly to the antibody including fluorophores, enzymatic substrates (HRP, AP), peptides, drugs as well as solid supports. AbFlex EED antibody was expressed as full-length IgG with mouse immunoglobulin heavy and light chains (IgG2a isotype) in mammalian 293 cells. EED (extraembryonic ectoderm) is a component of the Polycomb group (PcG) multiprotein complex PRC2. The PRC2 complex also contains EZH2 and SUZ12 and is recruited to Polycomb response elements and results in the methylation of histone H3 and lysine 27 and the silencing of gene expression. PRC2 initiates repression of the Hox genes during development and is involved in the maintenance of stem cell pluripotency. EED is a member of the superfamily of WD-40 repeat protein family and is required for PRC2-mediated H3K27 methylation. The PRC2 complex may also recruit platform DNMTs, thereby linking two systems of epigenetic repression.

Recommended Dilutions

ChIP-Seq	4 µg
ELISA	4 – 26ng/ml

Product Information

Source	Mouse
Isotype	IgG2a
Purification	Ni-NTA
Storage buffer	Purified IgG in 200 mM Hepes pH 7.5, 100 mM NaCl, 50 mM NaOAc, 30% glycerol and 0.035% sodium azide. Sodium azide is highly toxic.

Storage Conditions Some products may be shipped at room temperature. This will not affect their stability or performance. Avoid repeated freeze/thaw cycles by aliquoting items into single-use fractions for storage at -20°C for up to 2 years. Keep all reagents on ice when not in storage.

Note: For in vitro research use only, not for diagnostic or therapeutic use, This product is not a medical device.

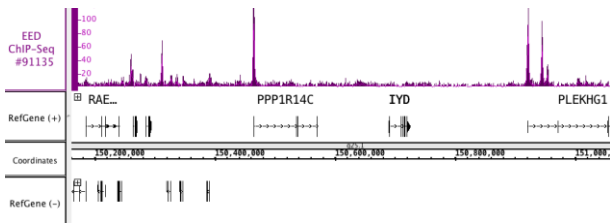
注意:在体外研究使用, 不用于诊断或治疗用途, 本产品不是医疗装置!

Web:www.ruisbio.com

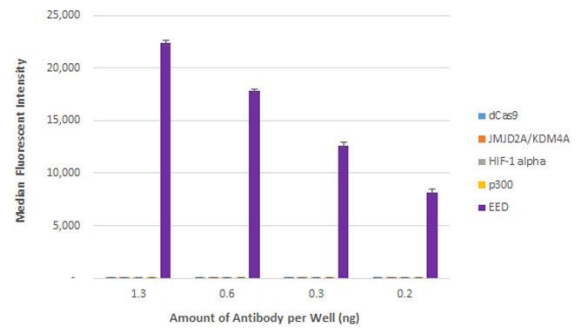
Tel:400-689-7068

Sales: sales@ruisbio.com





AbFlex EED Antibody (rAb) tested by ChIP-Seq. ChIP was performed using the ChIP-IT High Sensitivity Kit (Cat. No. 53040) with 30 ug chromatin from an acute large B-cell lymphoma cell line and 4 ug of EED antibody. ChIP DNA was sequenced on the Illumina HiSeq and 25 million sequence tags were mapped to identify EED binding sites. The image shows binding across a region of chromosome 6.



AbFlex EED antibody (rAb) tested by Luminex bead-based specificity analysis. Luminex bead-based specificity analysis was used to confirm the specificity of AbFlex™ EED antibody (rAb) for EED. Various proteins were conjugated to MagPlex Luminex beads and incubated with various amounts of AbFlex™ EED antibody (rAb). Protein-bound antibody was detected with anti-mouse IgG-Phycoerythrin and read in a Luminex instrument. Luminex is a registered trademark of Luminex Corporation.

