

AbFlex EZH2 antibody (rAb)

Catalog No.: RA9047

Basic Information

Molecular weight**Category**

Recombinant antibody

Applications

IP

Cross-Reactivity

Human

Background

AbFlex antibodies are recombinant antibodies (rAbs) that have been generated using defined DNA sequences to produce highly specific, reproducible antibodies. Each AbFlex antibody contains a 6xHis Tag, a Biotinylation Tag for enzymatic biotin conjugation using the biotin ligase, BirA, and a sortase recognition motif (LPXTG) to attach a variety of labels directly to the antibody including fluorophores, enzymatic substrates (HRP, AP), peptides, drugs as well as solid supports. AbFlex EZH2 antibody was expressed as full-length IgG with mouse immunoglobulin heavy and light chains (IgG2a isotype) in mammalian 293 cells. EZH2 – (Enhancer of Zeste homolog 2, also designated Enx1 and SETDB1) is a human homolog of the Drosophila Enhancer of Zeste protein. It contains a SET domain that catalyzes the mono-, di- and trimethylation of Histone H3 Lys27. EZH2, EED and Suz12 are present in the PRC protein complexes that function as mediators of epigenetic transcriptional silencing. Polycomb group proteins repress gene expression by binding to chromatin and locally altering chromatin structure. Dereglulation of EZH2 is linked to a variety of cancers.

Recommended Dilutions

IP 4 µg/ml

Product Information

Source	Mouse
Isotype	IgG2a
Purification	Protein A Chromatography
Storage buffer	Purified IgG in 140 mM Hepes, pH 7.5, 70 mM NaCl, 32 mM NaOAc, 0.035% sodium azide, 30% glycerol. Sodium azide is highly toxic.

Storage Conditions Some products may be shipped at room temperature. This will not affect their stability or performance. Avoid repeated freeze/thaw cycles by aliquoting items into single-use fractions for storage at -20°C for up to 2 years. Keep all reagents on ice when not in storage.

Note: For in vitro research use only, not for diagnostic or therapeutic use, This product is not a medical device.

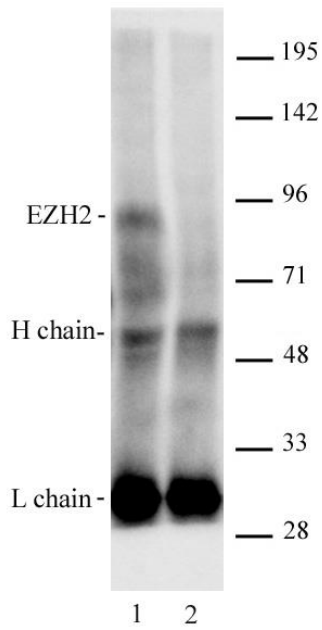
注意:在体外研究使用, 不用于诊断或治疗用途, 本产品不是医疗装置!

Web:www.ruisbio.com

Tel:400-689-7068

Sales: sales@ruisbio.com





AbFlex EZH2 antibody (rAb) tested by Immunoprecipitation. HeLa cell nuclear extract* was immunoprecipitated with 4 ug of AbFlex EZH2 antibody (lane 1) or control IgG2a (lane 2). Immunoprecipitates were run on SDS-PAGE and analyzed by Western blot using EZH2 polyclonal antibody (Cat. No. 39999) at 2 ug/ml, followed by incubation with Anti-Rabbit light chain secondary antibody.

