

Acf1 antibody (pAb)

Catalog No.: RA9002

Basic Information

Molecular weight

185KDa

Category

Primary antibody

Applications

WB, ICC, IF

Cross-Reactivity

Drosophila

Background

Drosophila Acf1 is a component of ACF, the ATP-utilizing chromatin assembly and remodeling factor protein complex. ACF catalyzes the ATP-dependent assembly of periodic nucleosome arrays in vitro. The catalytic subunit of ACF is the ISWI ATP-dependant chromatin remodeling protein. ACF is related to CHRAC (Chromatin Accessibility Complex), which also contains Acf1 and ISWI. ACF is involved in the establishment and possibly maintenance of silenced heterochromatic domains in the genome, both at pericentric heterochromatin and at genes repressed by the Polycomb complex.

Recommended Dilutions

WB 1:500-1:1000

ICC/IF 1:500-1:1000

Product Information

Source Rabbit

Isotype IgG

Purification Affinity Purified

Storage buffer PBS containing 0.1% sodium azide, 0.2 mg/ml BSA and 35% glycerol. Sodium azide is highly toxic.

Storage Conditions Some products may be shipped at room temperature. This will not affect their stability or performance. Avoid repeated freeze/thaw cycles by aliquoting items into single-use fractions for storage at -20°C for up to 2 years. Keep all reagents on ice when not in storage.

Note: For in vitro research use only, not for diagnostic or therapeutic use, This product is not a medical device.

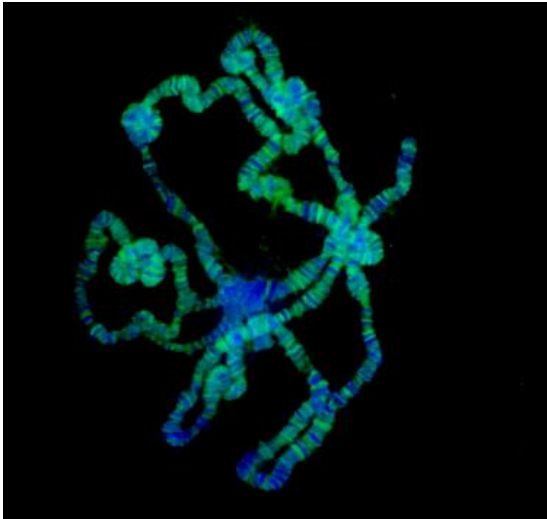
注意:在体外研究使用, 不用于诊断或治疗用途, 本产品不是医疗装置!

Web:www.ruisbio.com

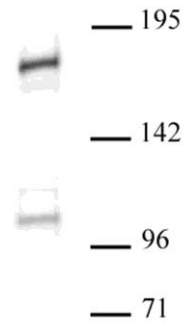
Tel:400-689-7068

Sales: sales@ruisbio.com





Acf1 pAb tested by immunofluorescence.
Drosophila polytene chromosomes stained with
Acf1 pAb (1:1,000 dilution).



Acf1 pAb tested by Western blot. Drosophila
Schneider L2 cells nuclear extract (10 ug) probed
with Acf1 pAb (1:500 dilution).

