

# Aurora B antibody (pAb)

Catalog No.: RA9020

## Basic Information

### Molecular weight

49 kDa

### Category

Polyclonal antibody

### Applications

ICC, IF, WB

### Cross-Reactivity

Human, Mouse, Wide Range Predicted

## Background

Aurora B (Aurora Kinase B, AurB, ARK2) is a Ser/Thr kinase that is part of the chromosomal passenger complex that associates with chromosomes and is an important regulator of mitosis and meiosis. Aurora B becomes concentrated at the centromere during the onset of mitosis, but relocates to the spindle midzone during anaphase. Aurora B phosphorylates a number of substrates, including INCENP, CENP-A, and Histone H3. Misregulation of Aurora B activity can lead to chromosome instability and is implicated in a number of cancers.

## Recommended Dilutions

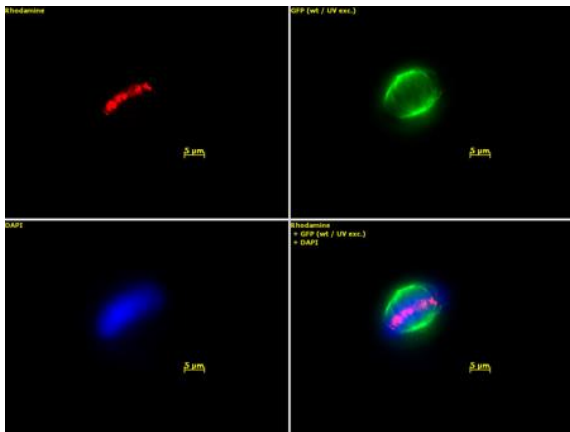
WB	1:500-1:5000
ICC/IF	1:200 - 1:1000

## Product Information

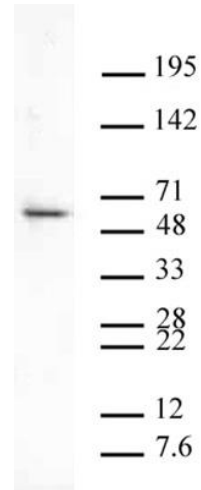
Source	Rabbit
Isotype	Serum
Purification	None
Storage buffer	Rabbit serum containing 30% glycerol and 0.035% sodium azide. Sodium azide is highly toxic.
Storage Conditions	Some products may be shipped at room temperature. This will not affect their stability or performance. Avoid repeated freeze/thaw cycles by aliquoting items into single-use fractions for storage at -20°C for up to 2 years. Keep all reagents on ice when not in storage.

Note: For in vitro research use only, not for diagnostic or therapeutic use, This product is not a medical device.  
注意:在体外研究使用, 不用于诊断或治疗用途, 本产品不是医疗装置!





Aurora B pAb tested by immunofluorescence. Top left: HeLa cells stained with Aurora B polyclonal antibody at a 1:200 dilution. Top right: Same cells stained with alpha Tubulin mAb. Bottom left: Same cells stained with DAPI. Bottom right: Merge of all 3 images.



Aurora B pAb tested by Western blot Nuclear extract of U2OS cells (20 ug per lane) probed with Aurora B polyclonal antibody (1:500 dilution).

