

Boris / CTCFL antibody (pAb)

Catalog No.: RA9052

Basic Information

Molecular weight

96 kDa

Category

Polyclonal antibody

Applications

ChIP, ChIP-Seq, WB

Cross-Reactivity

Human

Background

BORIS (Brother of Regulator of Imprinted Sites) / CTCFL (CTCF-like) is a zinc-finger DNA binding protein that acts as a chromatin insulator and a paralog of the CTCF protein. Normally, BORIS / CTCFL is expressed only in primary spermatocytes and is thought to play a role in resetting DNA methylation marks during the differentiation of male germ cells. BORIS / CTCFL is also expressed in many cancers and may serve a pro-proliferative function.

Recommended Dilutions

ChIP	5 μ l
ChIP-Seq	5 μ l
WB	1:500 - 1:2,000

Product Information

Source	Rabbit
Isotype	IgG
Purification	Affinity Purified
Storage buffer	Purified IgG in 70 mM Tris (pH 8), 105 mM NaCl, 31 mM glycine, 0.07 mM EDTA, 30% glycerol and 0.035% sodium azide. Sodium azide is highly toxic.

Storage Conditions Some products may be shipped at room temperature. This will not affect their stability or performance. Avoid repeated freeze/thaw cycles by aliquoting items into single-use fractions for storage at -20°C for up to 2 years. Keep all reagents on ice when not in storage.

Note: For in vitro research use only, not for diagnostic or therapeutic use, This product is not a medical device.

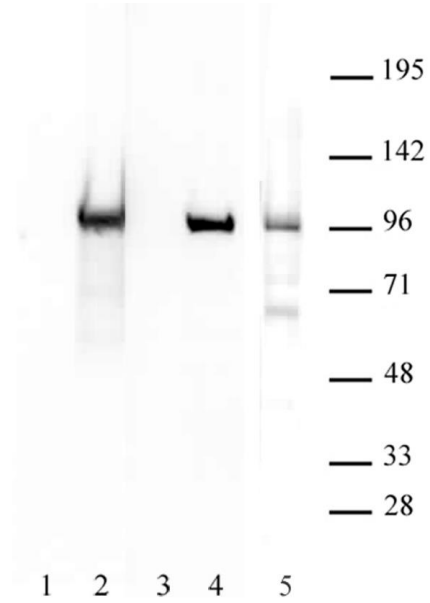
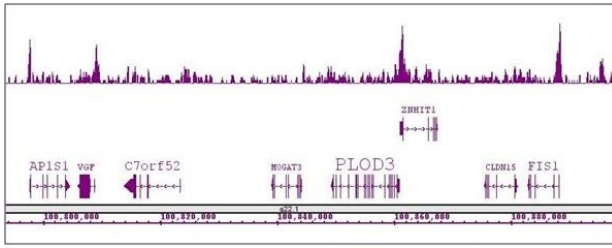
注意:在体外研究使用, 不用于诊断或治疗用途, 本产品不是医疗装置!

Web:www.ruisbio.com

Tel:400-689-7068

Sales: sales@ruisbio.com





Boris / CTCFL antibody (pAb) tested by ChIP-Seq. ChIP was performed using the ChIP-IT High Sensitivity Kit (Cat. No. 53040) with 30 ug of chromatin from human testis and 2 ul of antibody. ChIP DNA was sequenced on the Illumina HiSeq and 20 million sequence tags were mapped to identify Boris / CTCFL binding sites. The image shows binding across a region of chromosome 7. You can view the complete data set in the UCSC Genome Browser, starting at this specific location, here.

BORIS / CTCFL antibody (pAb) tested by Western blot. 20 ug of LNCaP nuclear extract was probed with BORIS / CTCFL antibody at 1:1,000.



Note: For in vitro research use only, not for diagnostic or therapeutic use, This product is not a medical device.

注意:在体外研究使用, 不用于诊断或治疗用途, 本产品不是医疗装置!

Web:www.ruisbio.com

Tel:400-689-7068

Sales: sales@ruisbio.com