

C17orf96 antibody (pAb)

Catalog No.: RA9034

Basic Information

Molecular weight

50 kDa

Category

Polyclonal antibody

Applications

ChIP-Seq, WB

Cross-Reactivity

Mouse

Background

C17orf96 has been shown to be highly expressed in mammalian ES cells and has been implicated as an interacting protein of the PRC2 complex (polycomb repressive complex 2). It may function as a CpG island binding protein and thus a potential regulator of gene transcription.

Recommended Dilutions

WB 1:500-1:2000

Product Information

Source	Rabbit
Isotype	IgG
Purification	Affinity Purified
Storage buffer	Purified IgG in 70 mM Tris (pH 8), 105 mM NaCl, 31 mM glycine, 0.07 mM EDTA, 30% glycerol and 0.035% sodium azide. Sodium azide is highly toxic.
Storage Conditions	Some products may be shipped at room temperature. This will not affect their stability or performance. Avoid repeated freeze/thaw cycles by aliquoting items into single-use fractions for storage at -20°C for up to 2 years. Keep all reagents on ice when not in storage.

Note: For in vitro research use only, not for diagnostic or therapeutic use, This product is not a medical device.

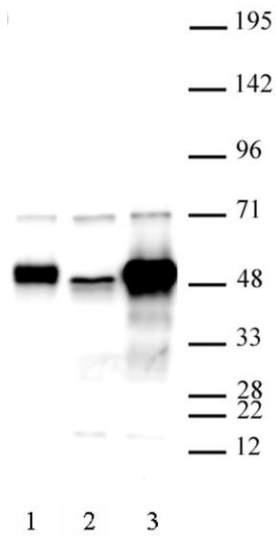
注意:在体外研究使用, 不用于诊断或治疗用途, 本产品不是医疗装置!

Web: www.ruisbio.com

Tel: 400-689-7068

Sales: sales@ruisbio.com





C17orf96 antibody (pAb) tested by Western blot.
Detection of C17orf96 by Western blot analysis. Lane 1:
Mouse ES cell nuclear extract. Lane 2: Mouse ES cell
nuclear extract from cells with a C17orf96 knockdown.
Lane 3: Mouse ES cell nuclear extract from cells with
C17orf96 overexpressed. All probed with C17orf96
antibody at a dilution of 1:1,000.

Note: For in vitro research use only, not for diagnostic or therapeutic use, This product is not a medical device.

注意:在体外研究使用, 不用于诊断或治疗用途, 本产品不是医疗装置!

Web: www.ruisbio.com

Tel: 400-689-7068

Sales: sales@ruisbio.com

