

CABIN1 antibody (pAb)

Catalog No.: RA9027

Basic Information

Molecular weight

280 kDa

Category

Polyclonal antibody

Applications

IP, WB

Cross-Reactivity

Human

Background

CABIN1 (calcineurin-binding protein 1) may be required for replication-independent chromatin assembly. May serve as a negative regulator of T-cell receptor (TCR) signaling via inhibition of calcineurin. Inhibition of activated calcineurin is dependent on both PKC and calcium signals. Component of a complex that includes at least ASF1A, CABIN1, HIRA, Histone H3.3 and UBN1.

Recommended Dilutions

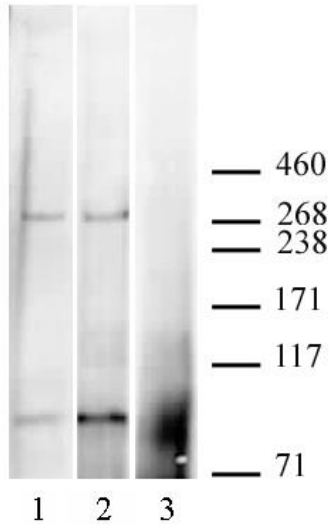
IP	6 μ l
WB	1:500

Product Information

Source	Rabbit
Isotype	IgG
Purification	Affinity Purified
Storage buffer	Purified IgG in PBS with 30% glycerol and 0.035% sodium azide. Sodium azide is highly toxic.
Storage Conditions	Some products may be shipped at room temperature. This will not affect their stability or performance. Avoid repeated freeze/thaw cycles by aliquoting items into single-use fractions for storage at -20°C for up to 2 years. Keep all reagents on ice when not in storage.

Note: For in vitro research use only, not for diagnostic or therapeutic use, This product is not a medical device.
注意:在体外研究使用, 不用于诊断或治疗用途, 本产品不是医疗装置!





ABIN1 antibody (pAb) tested by Immunoprecipitation / Western blot. 10 ug of HIRA antibody (mAb), Cat. No. 39555, (lane 1) or 10 ul of CABIN1 antibody (pAb) (lane 2) was used to immunoprecipitate CABIN1 from 1mg of U2OS nuclear extract. 10 ug of rabbit IgG was also used as a negative control (lane 3). The immunoprecipitated protein was detected by Western blotting using CABIN1 antibody at a dilution of 1:500.



Note: For in vitro research use only, not for diagnostic or therapeutic use, This product is not a medical device.

注意:在体外研究使用, 不用于诊断或治疗用途, 本产品不是医疗装置!

Web: www.ruisbio.com

Tel: 400-689-7068

Sales: sales@ruisbio.com