

CARM1 antibody (pAb)

Catalog No.: RA9039

Basic Information

Molecular weight

60 kDa

Category

Polyclonal antibody

Applications

ChIP, IHC, IP, WB

Cross-Reactivity

Human, Mouse, Rat

Background

CARM1 (Coactivator-associated arginine methyltransferase 1 or CARM 1) is a protein arginine N-methyltransferase that catalyzes the mono- and asymmetric dimethylation of arginine residues in its substrate proteins. It serves as a coactivator of transcription and also plays a role in nuclear receptors. CARM1 methylates histone H3 at Arg2, Arg17 and Arg26; it also methylates a number of non-histone substrates involved in the regulation and mechanism of gene expression.

Recommended Dilutions

WB 1:250 - 1:1000

Product Information

Source Rabbit

Isotype Serum

Purification None

Storage buffer Rabbit serum containing 30% glycerol and 0.035% sodium azide. Sodium azide is highly toxic.

Storage Conditions Some products may be shipped at room temperature. This will not affect their stability or performance. Avoid repeated freeze/thaw cycles by aliquoting items into single-use fractions for storage at -20°C for up to 2 years. Keep all reagents on ice when not in storage.

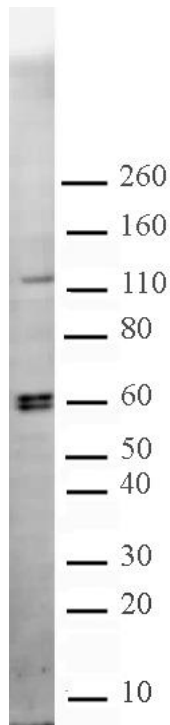
Note: For in vitro research use only, not for diagnostic or therapeutic use, This product is not a medical device.
注意:在体外研究使用, 不用于诊断或治疗用途, 本产品不是医疗装置!

Web: www.ruisbio.com

Tel: 400-689-7068

Sales: sales@ruisbio.com





CARM1 pAb tested by Western blot. Whole-cell extract of HEK293 cells (10 ug) probed with CARM1 pAb at a dilution of 1:500.

