

# Caspase-3 antibody

Catalog No.: RA9053

## Basic Information

### Molecular weight

32 kDa

### Category

Polyclonal antibody

### Applications

FC, IF, IHC, IP, WB, ELISA

### Cross-Reactivity

Human, Mouse, Rat

## Background

Caspases, a family of endoproteases, are critical players in cell regulatory networks controlling inflammation and cell death. Initiator caspases (caspase-2, -8, -9, -10, -11, and -12) cleave and activate downstream effector caspases (caspase-3, -6, and -7), which in turn execute apoptosis by cleaving targeted cellular proteins. Caspase 3 (also named CPP32, SCA-1, and Apopain) proteolytically cleaves poly(ADP-ribose) polymerase (PARP) at the beginning of apoptosis. Caspase 3 plays a key role in the activation of sterol regulatory element binding proteins (SREBPs) between the basic helix-loop-helix leucine zipper domain and the membrane attachment domain. Caspase 3 can also form heterocomplex with other proteins and performs the molecular mass of 50-70 kDa. This antibody can recognize p17, p19 and p32 of Caspase 3.

## Recommended Dilutions

IP	0.5-4.0 ug for 1.0-3.0 mg
IF	1:50-1:500
WB	1:500 - 1:2,000
IHC	1:50-1:500
FC	0.20 ug

## Product Information

Source	Rabbit
Isotype	IgG
Purification	Antigen affinity
Storage buffer	PBS with 0.02% sodium azide and 50% glycerol pH 7.3.
Storage Conditions	Store at -20°C. Stable for one year after shipment. Aliquoting is unnecessary for -20oC storage.

Note: For in vitro research use only, not for diagnostic or therapeutic use, This product is not a medical device.

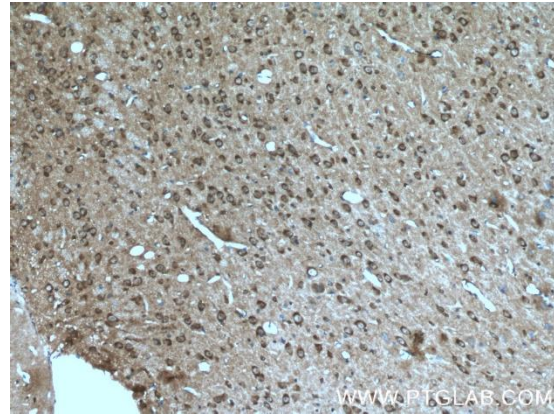
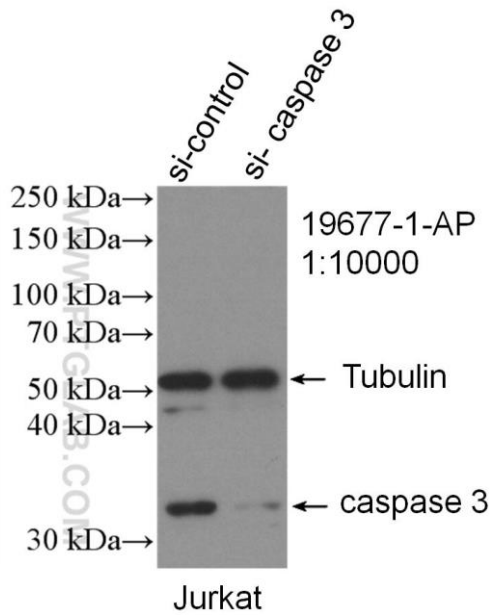
注意:在体外研究使用, 不用于诊断或治疗用途, 本产品不是医疗装置!

Web:www.ruisbio.com

Tel:400-689-7068

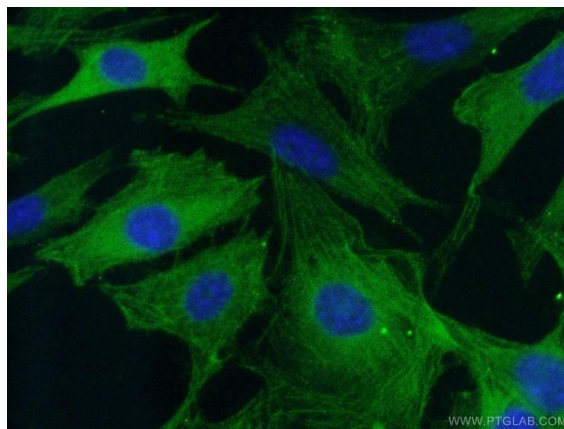
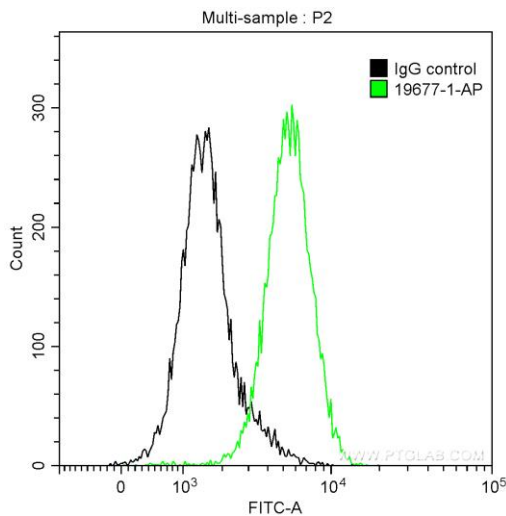
Sales: sales@ruisbio.com





WB result of Caspase 3 antibody (19677-1-AP; 1:10000; incubated at room temperature for 1.5 hours) with sh-Control and sh-Caspase 3 transfected Jurkat cells.

Immunohistochemical analysis of paraffin-embedded mouse brain tissue slide using 19677-1-AP (Caspase 3 antibody) at dilution of 1:200 (under 10x lens. Heat mediated antigen retrieval with Tris-EDTA buffer (pH 9.0).



1X10<sup>6</sup> HepG2 cells were intracellularly stained with 0.2 ug Anti-Human Caspase 3 Anti-Rabbit IgG(H+L) at dilution 1:1000 (green), and 0.2 ug Control Antibody. Cells were fixed with 90% MeOH.

Immunofluorescent analysis of (-20°C Ethanol) fixed NIH/3T3 cells using 19677-1-AP (Caspase 3 antibody) at dilution of 1:50 and Alexa Fluor 488-conjugated AffiniPure Goat Anti-Rabbit IgG(H+L).



Note: For in vitro research use only, not for diagnostic or therapeutic use, This product is not a medical device.

注意:在体外研究使用, 不用于诊断或治疗用途, 本产品不是医疗装置!

Web:www.ruisbio.com

Tel:400-689-7068

Sales: sales@ruisbio.com