

# MonoMethyl-Histone H3-K4 Rabbit mAb

Catalog No.: RA8011

## Basic Information

### Observed MW

17kDa

### Calculated MW

16kDa

### Category

Primary antibody

### Applications

IF/ICC,ChIP

### Cross-Reactivity

Human,Mouse,Rat,Other (Wide Range)

## Background

Histones are basic nuclear proteins that are responsible for the nucleosome structure of the chromosomal fiber in eukaryotes. Nucleosomes consist of approximately 146 bp of DNA wrapped around a histone octamer composed of pairs of each of the four core histones (H2A, H2B, H3, and H4). The chromatin fiber is further compacted through the interaction of a linker histone, H1, with the DNA between the nucleosomes to form higher order chromatin structures. This gene is intronless and encodes a replication-dependent histone that is a member of the histone H3 family. Transcripts from this gene lack polyA tails; instead, they contain a palindromic termination element. This gene is located separately from the other H3 genes that are in the histone gene cluster on chromosome 6p22-p21.3.

## Recommended Dilutions

DB	1:10000 - 1:50000
WB	1:2000 - 1:20000
IHC-P	1:50 - 1:200
IF/ICC	1:100 - 1:500
ChIP	1:50 - 1:200

## Product Information

Source	Rabbit
Isotype	IgG
Purification	Affinity purification
Storage	Store at -20°C. Avoid freeze / thaw cycles.
Storage Buffer	PBSwith0.05%proclin300, 0.05% BSA, 50% glycerol,pH7.3.

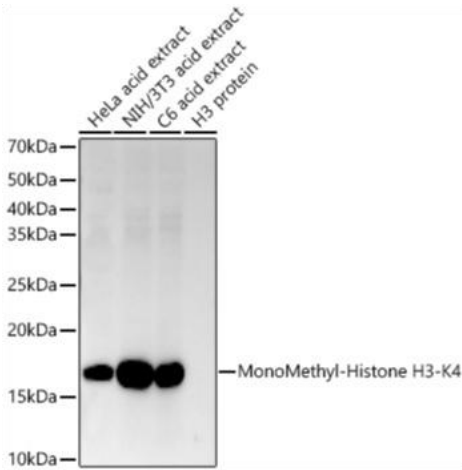
Note: For in vitro research use only, not for diagnostic or therapeutic use, This product is not a medical device.  
注意:在体外研究使用, 不用于诊断或治疗用途, 本产品不是医疗装置!

Web:www.ruisbio.com

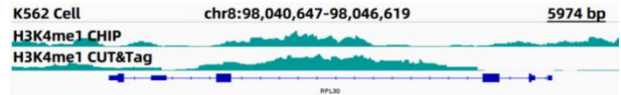
Tel:400-689-7068

Sales: sales@ruisbio.com

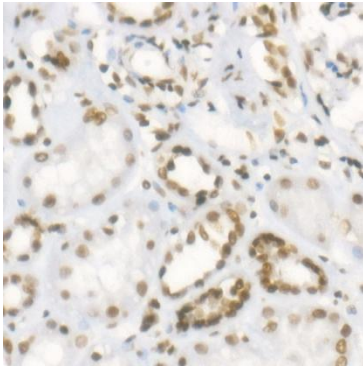




Western blot analysis of extracts of various cell lines, using MonoMethyl-Histone H3-K4 antibody (RA8011) at 1:20000 dilution.  
 Secondary antibody: HRP Goat Anti-Rabbit IgG (H+L) (AS014) at 1:10000 dilution.  
 Lysates/proteins: 25µg per lane.  
 Blocking buffer: 3% nonfat dry milk in TBST.  
 Detection: ECL Enhanced Kit.  
 Exposure time: 60s



CUT&Tag was performed using the CUT&Tag Assay Kit (pAG-Tn5) for Illumina(RK9002) from 10<sup>6</sup> K562 cells with 1 µg MonoMethyl-Histone H3-K4 antibody (RA8011), along with a Goat Anti-Rabbit IgG(H+L). The CUT&Tag results indicate the enrichment pattern of H3K4me1 in representative gene loci (RPL30), as shown in figure.



Immunohistochemistry of paraffin-embedded human kidney using MonoMethyl-Histone H3-K4 Rabbit mAb at dilution of 1:100(40x lens). Perform high pressure antigen retrieval with 10 mM citrate buffer pH 6.0 before commencing with IHC staining protocol.

