

# MonoMethyl-Histone H3-K9 Rabbit pAb

Catalog No.: RA8015

## Basic Information

### Observed MW

17KDa

### Calculated MW

16kDa

### Category

Primary antibody

### Applications

IF/ICC,ChIP

### Cross-Reactivity

Human, Mouse, Rat

## Background

Positive Samples: HeLa, H3 protein; Cellular Location: Chromosome, Nucleus.

## Recommended Dilutions

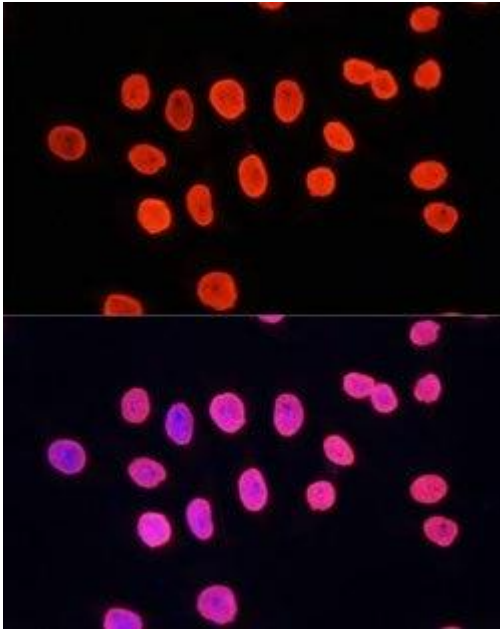
DB	Assay-dependent
WB	1:500-1:2000
IHC (P)	1:50-1:200
IF/ICC	1:50-1:200
ChIP	1:20-1:100

## Product Information

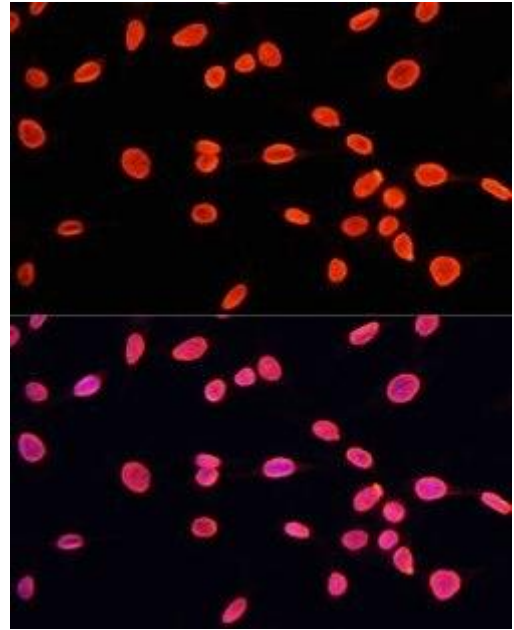
Source	Rabbit
Isotype	IgG
Purification	Antigen affinity chromatography
Storage buffer	PBS, pH 7.3, with 50% glycerol
Storage Conditions	-20° C, Avoid Freeze/Thaw Cycles

Note: For in vitro research use only, not for diagnostic or therapeutic use, This product is not a medical device.  
注意:在体外研究使用, 不用于诊断或治疗用途, 本产品不是医疗装置!

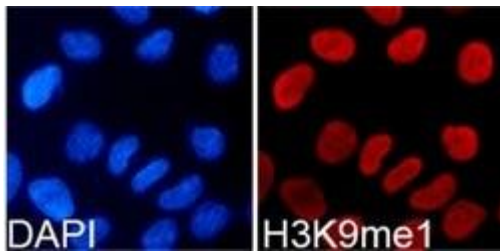




**H3K9me1 Antibody in ICC** Immunocytochemistry-Immunofluorescence analysis of H3K9me1 was performed in NIH/3T3 cells using H3K9me1 Polyclonal Antibody at a dilution of 1:100. Blue: DAPI for nuclear staining.



**H3K9me1 Antibody in ICC** Immunocytochemistry-Immunofluorescence analysis of H3K9me1 was performed in HeLa cells using H3K9me1 Polyclonal Antibody at a dilution of 1:100. Blue: DAPI for nuclear staining.



**H3K9me1 Antibody in ICC** Immunocytochemistry-Immunofluorescence analysis of H3K9me1 was performed in 293T cells using H3K9me1 Polyclonal Antibody. Blue: DAPI for nuclear staining.



Note: For in vitro research use only, not for diagnostic or therapeutic use, This product is not a medical device.

注意:在体外研究使用,不用于诊断或治疗用途,本产品不是医疗装置!

Web: [www.ruisbio.com](http://www.ruisbio.com)

Tel: 400-689-7068

Sales: [sales@ruisbio.com](mailto:sales@ruisbio.com)